

# ADVANCED MANUFACTURING



## QUALITY JOBS IN DEMAND

	DESCRIPTION	MEDIAN WAGE	EDUCATION LEVEL
<b>Industrial Machinery Mechanics</b>	Maintain and repair factory equipment and other industrial machinery	<b>\$62,470</b>	Post-secondary certificate
<b>Machinists</b>	Set up and operate a variety of machine tools to produce precision parts and instruments out of metal	<b>\$48,210</b>	Post-secondary certificate
<b>Computer Numerically Controlled (CNC) Tool Operators</b>	Operate computer-controlled tools, machines, or robots	<b>\$47,160</b>	Post-secondary certificate
<b>Welders</b>	Use hand-held or remotely controlled equipment to join or cut metal parts	<b>\$46,910</b>	Post-secondary certificate
<b>Assemblers &amp; Fabricators</b>	Work as part of a team having responsibility for assembling an entire product or component of a product	<b>\$42,250</b>	High school diploma

**LEARN MORE**

Explore local careers  
[kentuckianaworks.org/explore](https://kentuckianaworks.org/explore)



Source: Bureau of Labor Statistics (2022)

# CONSTRUCTION



## QUALITY JOBS IN DEMAND

	DESCRIPTION	MEDIAN WAGE	EDUCATION LEVEL
<b>Electricians</b>	Install, maintain, and repair electrical wiring and equipment	<b>\$60,390</b>	High school diploma + Apprenticeship
<b>Plumbers</b>	Assemble, install, and repair pipes of heating, water, or drainage systems	<b>\$59,470</b>	High school diploma + Apprenticeship
<b>Construction Equipment Operators</b>	Operate power construction equipment to excavate, move, and grade earth, erect structures, or pour concrete	<b>\$55,840</b>	High school diploma
<b>Carpenters</b>	Construct, install, and repair structures made of wood	<b>\$55,840</b>	High school diploma + Apprenticeship
<b>HVAC Mechanics &amp; Installers</b>	Install or repair heating, central air conditioning, HVAC, or refrigeration systems	<b>\$49,440</b>	Post-secondary certificate

**LEARN MORE**

Explore local careers  
[kentuckianaworks.org/explore](https://kentuckianaworks.org/explore)



KENTUCKIANAWORKS

Source: Bureau of Labor Statistics (2022)

# BUSINESS



## QUALITY JOBS IN DEMAND

	DESCRIPTION	MEDIAN WAGE	EDUCATION LEVEL
<b>Project Management Specialists</b>	Analyze and coordinate the schedule, timeline, procurement, staffing, and budget of a product or service on a per project basis	<b>\$80,970</b>	Bachelor's degree
<b>Accountants</b>	Analyze financial information and prepare reports to keep track of the finances of an organization	<b>\$69,410</b>	Bachelor's degree
<b>Human Resources Specialists</b>	Recruit, screen, interview, or place individuals within an organization	<b>\$60,570</b>	Bachelor's degree
<b>Training &amp; Development Specialists</b>	Design and conduct training programs to improve individual and organizational performance	<b>\$60,040</b>	Bachelor's degree
<b>Market Research Analysts</b>	Conduct research to determine if there is a need for a product and what people will pay for it	<b>\$58,420</b>	Bachelor's degree

**LEARN MORE**

Explore local careers  
[kentuckianaworks.org/explore](https://kentuckianaworks.org/explore)



Source: Bureau of Labor Statistics (2022)

# INFORMATION TECHNOLOGY



## QUALITY JOBS IN DEMAND

	DESCRIPTION	MEDIAN WAGE	EDUCATION LEVEL
<b>Software Developers</b>	Design and create computer software applications	<b>\$101,580</b>	Bachelor's degree
<b>Computer Systems Analysts</b>	Study an organization's current computer operations and design solutions to improve efficiency	<b>\$84,740</b>	Bachelor's degree
<b>Data Scientists</b>	Transform raw data into meaningful information using data-oriented programming languages and visualization software	<b>\$81,990</b>	Bachelor's degree
<b>Network &amp; Computer Systems Administrators</b>	Responsible for the day-to-day operation of an organization's computer network	<b>\$80,560</b>	Bachelor's degree
<b>Computer User Support Specialists</b>	Provide help and advice to people with questions or problems related to their computer	<b>\$49,350</b>	Post-secondary certificate

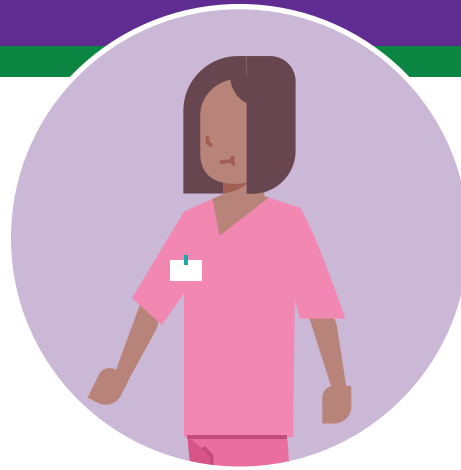
**LEARN MORE**

Explore local careers  
[kentuckianaworks.org/explore](https://kentuckianaworks.org/explore)



Source: Bureau of Labor Statistics (2022)

# HEALTHCARE



## QUALITY JOBS IN DEMAND

	DESCRIPTION	MEDIAN WAGE	EDUCATION LEVEL
Registered Nurses (RN)	Provide and coordinate patient care, educate patients about various health conditions, and provide advice and support	<b>\$79,150</b>	Bachelor's degree
Respiratory Therapists	Assess, treat, and care for patients with breathing disorders	<b>\$64,520</b>	Associate's degree
Radiologic Technologists	Take x-rays and CAT scans	<b>\$62,950</b>	Associate's degree
Clinical Laboratory Technologists	Perform complex medical laboratory tests for diagnosis, treatment, and prevention of disease	<b>\$56,310</b>	Bachelor's degree
Licensed Practical Nurses (LPN)	Provide basic nursing care for sick, injured, or recovering patients	<b>\$51,040</b>	Post-secondary certificate

**LEARN MORE**

Explore local careers  
[kentuckianaworks.org/explore](https://kentuckianaworks.org/explore)



Source: Bureau of Labor Statistics (2022)

# TRANSPORTATION & LOGISTICS



## QUALITY JOBS IN DEMAND

	DESCRIPTION	MEDIAN WAGE	EDUCATION LEVEL
<b>Aircraft Mechanics &amp; Service Technicians</b>	Diagnose, adjust, repair, or overhaul aircraft engines and assemblies, such as hydraulic and pneumatic systems	<b>\$75,440</b>	Post-secondary certificate
<b>Heavy and Tractor-Trailer Truck Drivers</b>	Drive a tractor-trailer combination or a truck with a capacity of at least 26,001 pounds Gross Vehicle Weight (GVW). May be required to unload truck	<b>\$51,630</b>	Post-secondary certificate
<b>Bus and Truck Mechanics &amp; Diesel Engine Specialists</b>	Diagnose, adjust, repair, or overhaul buses and trucks, or maintain and repair any type of diesel engines	<b>\$51,450</b>	High school diploma
<b>School Bus Drivers</b>	Drive a school bus to transport students. Ensure adherence to safety rules. May assist students in boarding or exiting	<b>\$49,120</b>	High school diploma
<b>Light Truck Drivers</b>	Drive a light vehicle, such as a truck or van, with a capacity of less than 26,001 pounds Gross Vehicle Weight (GVW), primarily to pick up merchandise or packages from a distribution center and deliver. May load and unload vehicle	<b>\$46,010</b>	High school diploma

**LEARN MORE**

Explore local careers  
[kentuckianaworks.org/explore](https://kentuckianaworks.org/explore)



Source: Bureau of Labor Statistics (2022)